

---

Precision grinding solutions



## Technical Catalogue Grinder Accessory Parts



---

Precision grinding solutions

## SAP-20-PP

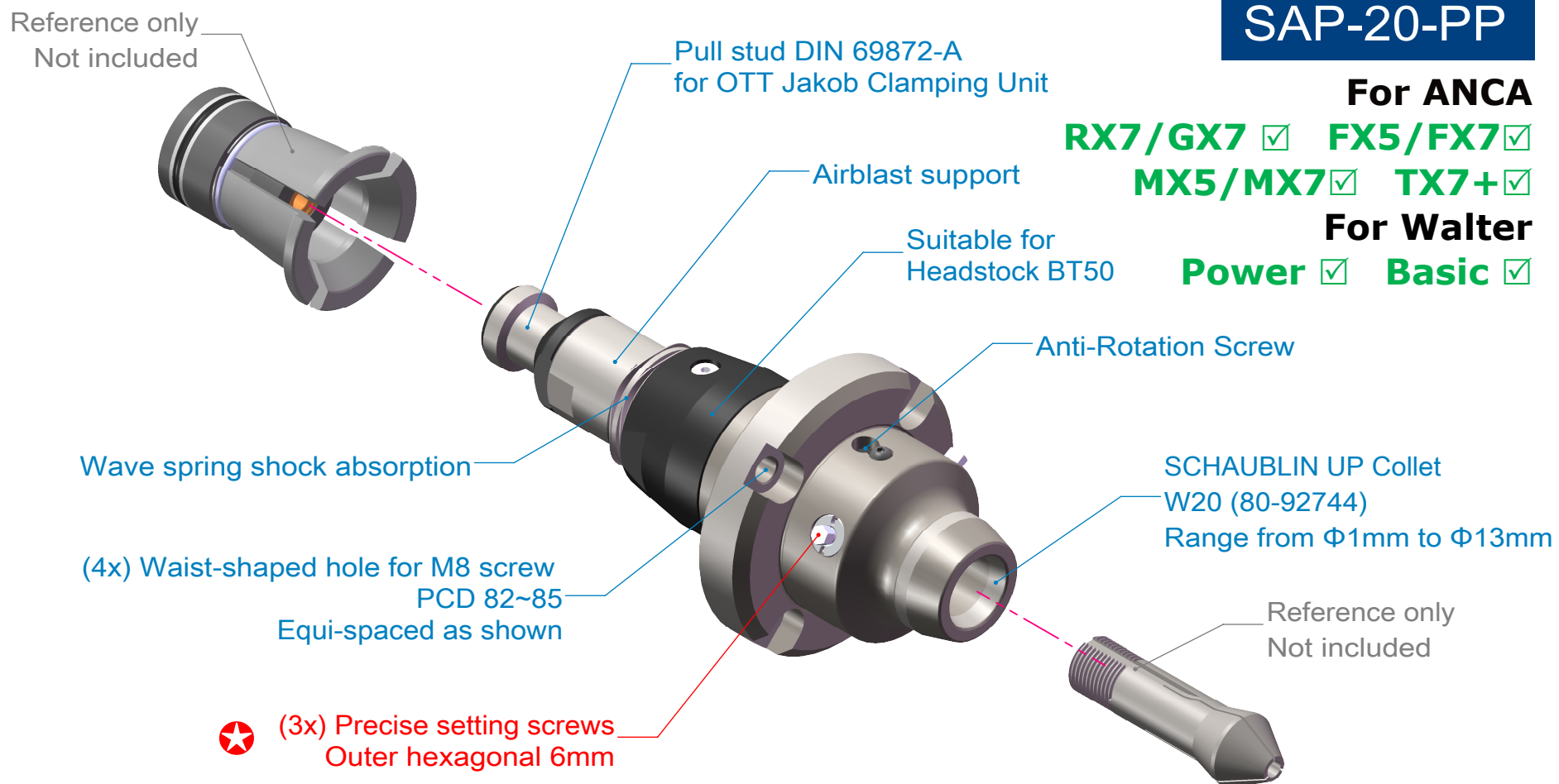
**For ANCA**

**RX7/GX7** ✓ **FX5/FX7** ✓

**MX5/MX7** ✓ **TX7+** ✓

**For Walter**

**Power** ✓ **Basic** ✓

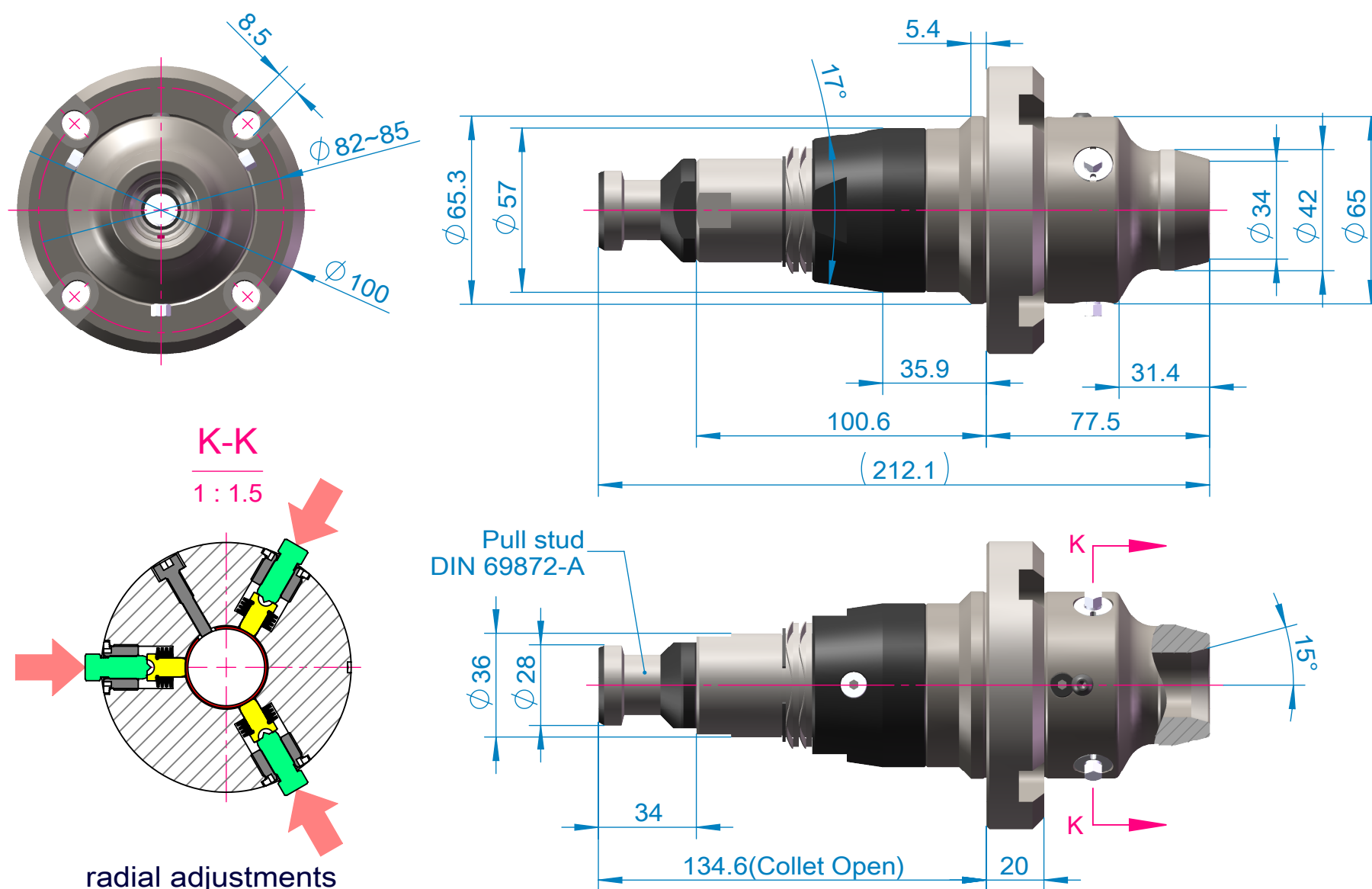


This collet assembly uses Schaublin W20 collets up to 13 mm (available in both metric and imperial sizes).

It can be mounted on ANCA RX7, GX7, FX Series, MX Series and TX7+ without needing an adaptor plate. Fastgrind and FX3 needs to be equipped with clamping system first.

The collet, when inserted into the adaptor, can be manipulated using three adjustment pins spaced equally around the adaptor. By adjusting the collet, the tool can be made to run true. The tool will remain true running over short batches.

The chuck utilizes the standard pull stud arrangement used for all ANCA work holding systems.





## SAP-20-HY

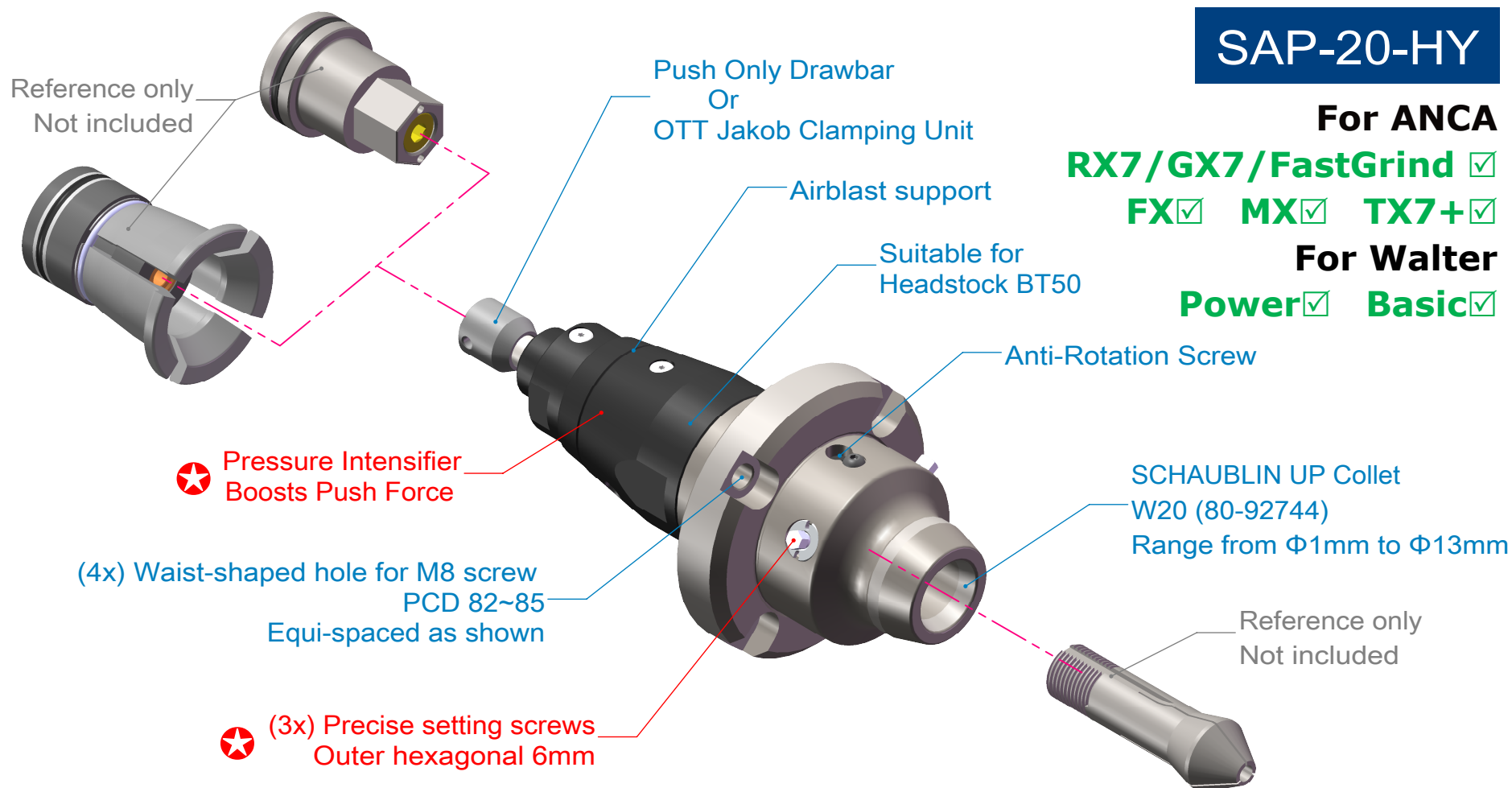
**For ANCA**

**RX7/GX7/FastGrind** ✓

**FX** ✓ **MX** ✓ **TX7+** ✓

**For Walter**

**Power** ✓ **Basic** ✓

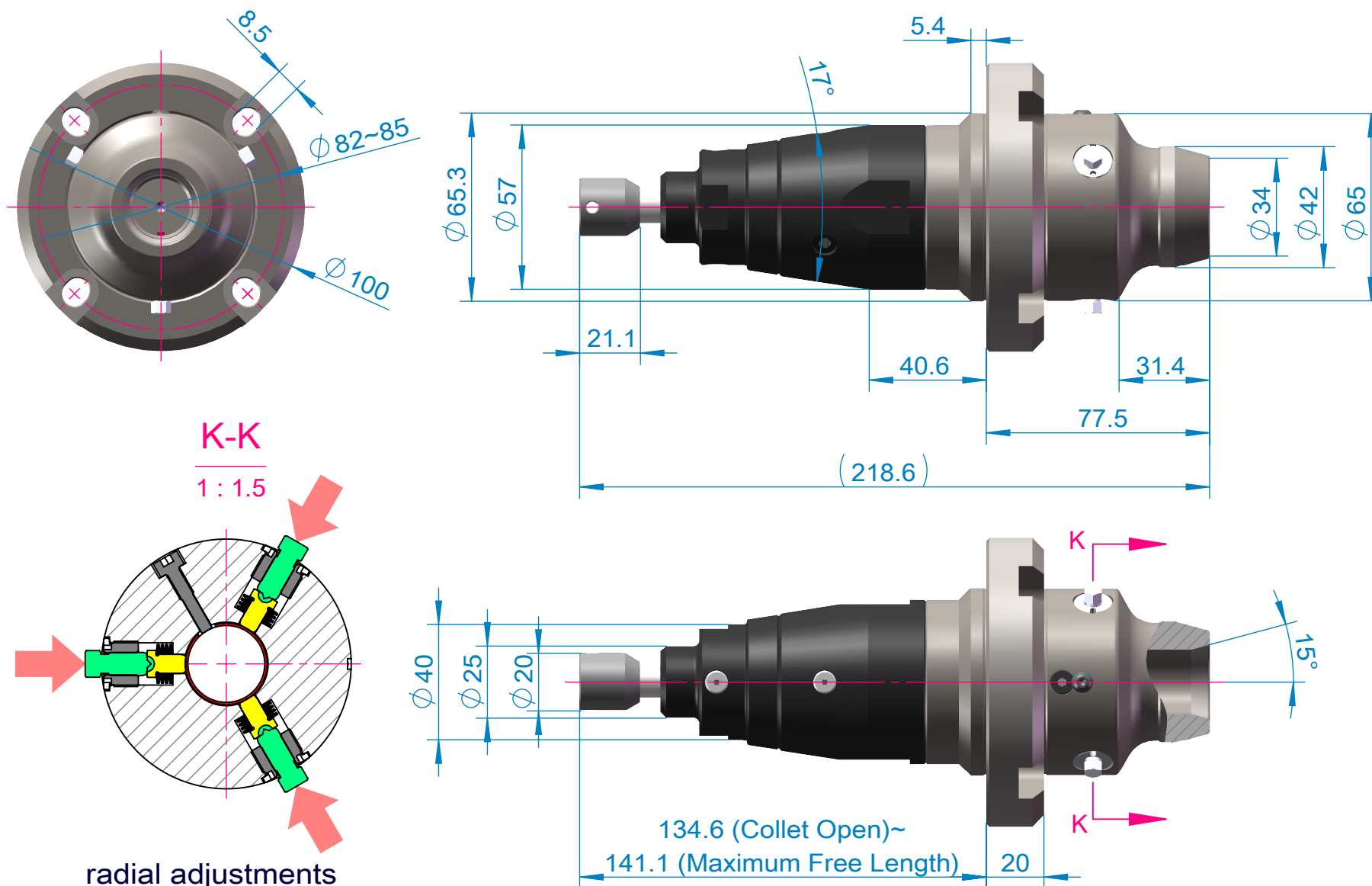


This collet assembly uses Schaublin W20 collets up to 13 mm (available in both metric and imperial sizes).

It can be mounted on ANCA RX7, GX7, Fastgrind, FX Series, MX Series and TX7+ without needing an adaptor plate.

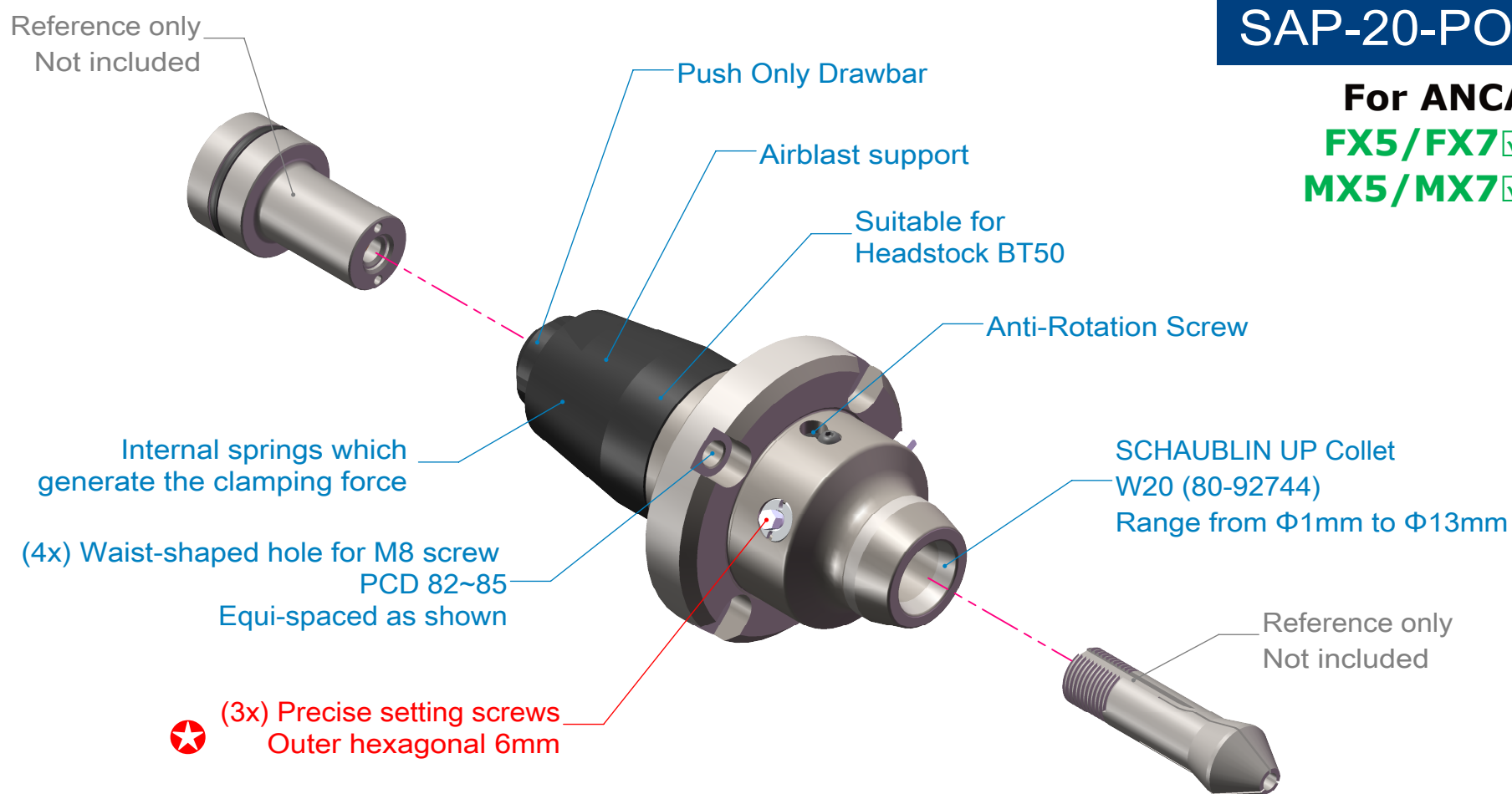
The collet, when inserted into the adaptor, can be manipulated using three adjustment pins spaced equally around the adaptor. By adjusting the collet, the tool can be made to run true. The tool will remain true running over short batches.

It is suggested that the drawbar push force of the machine should be greater than 3kN.



## SAP-20-PO

**For ANCA**  
**FX5/FX7** ✓  
**MX5/MX7** ✓

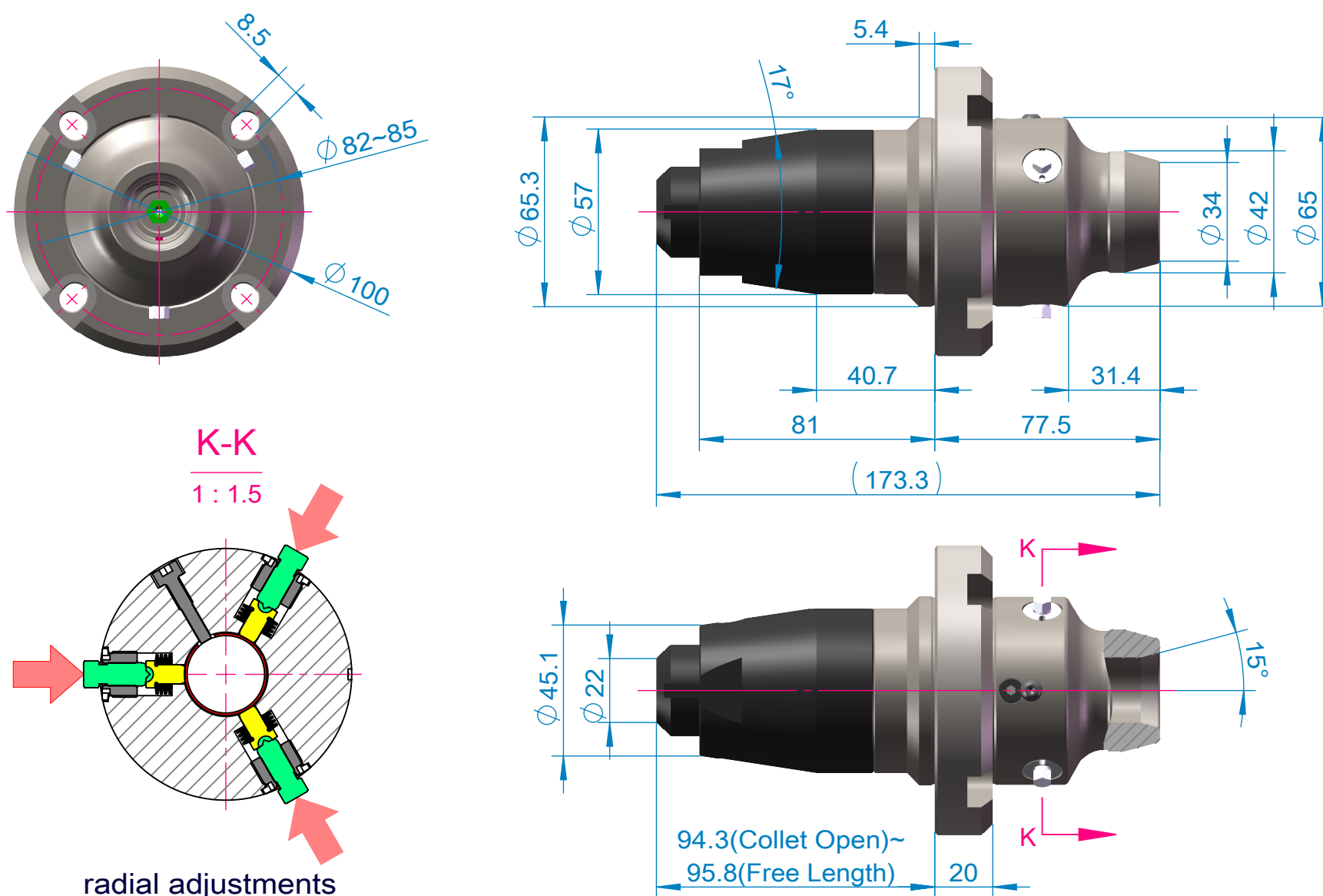


This collet assembly uses Schaublin W20 collets up to 13 mm (available in both metric and imperial sizes).

It can be mounted on ANCA FX Series and MX Series without needing an adaptor plate.

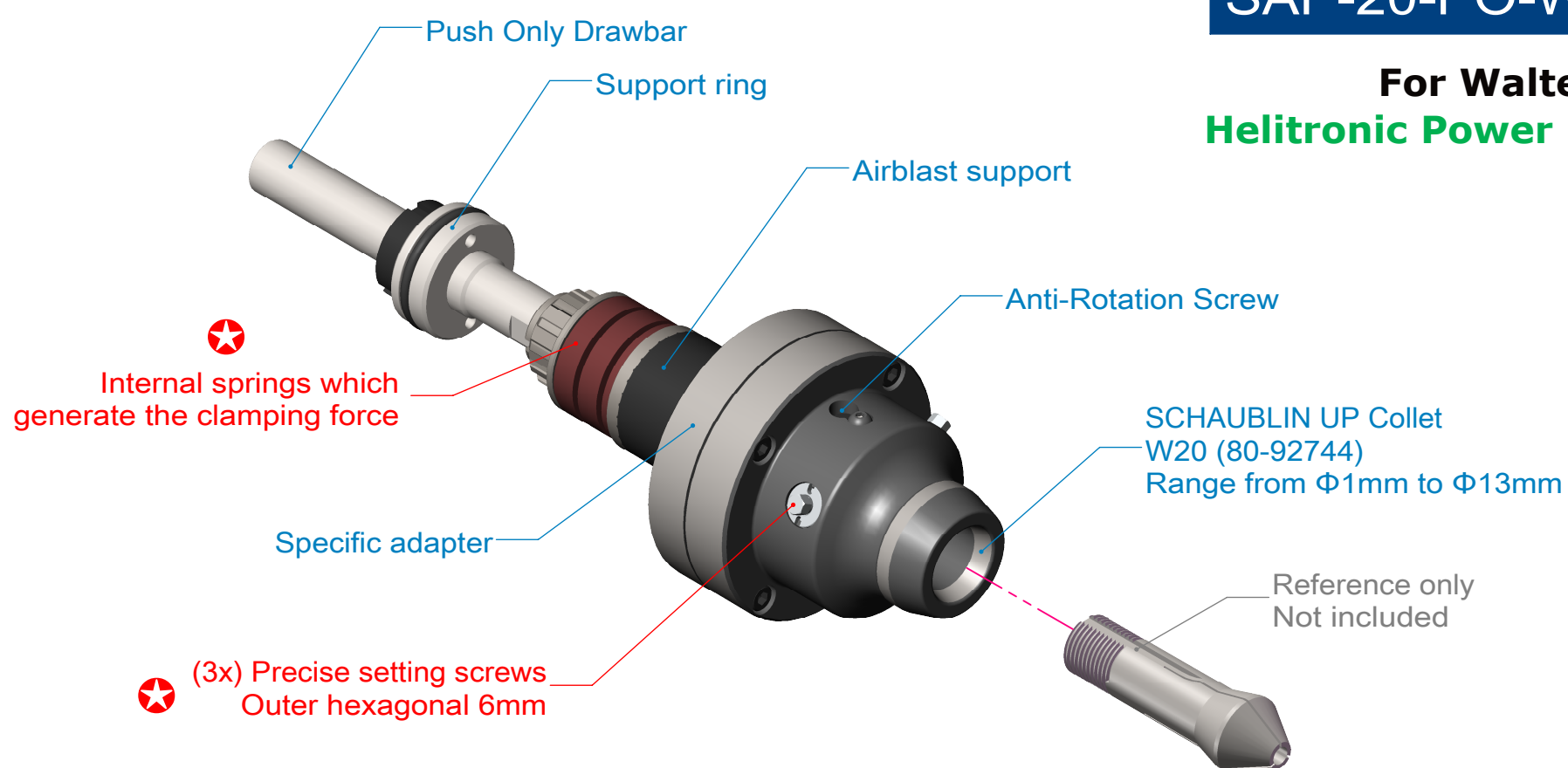
Each of these collet adapters has internal springs which generate the clamping force. Due to this, these collet adapters do not use a draw bar but instead rely on a push bar to open the collet. This removes any negative influence the headstock may have on the final run-out.

It is suggested that the drawbar push force of the machine should be greater than 7kN.



## SAP-20-PO-W

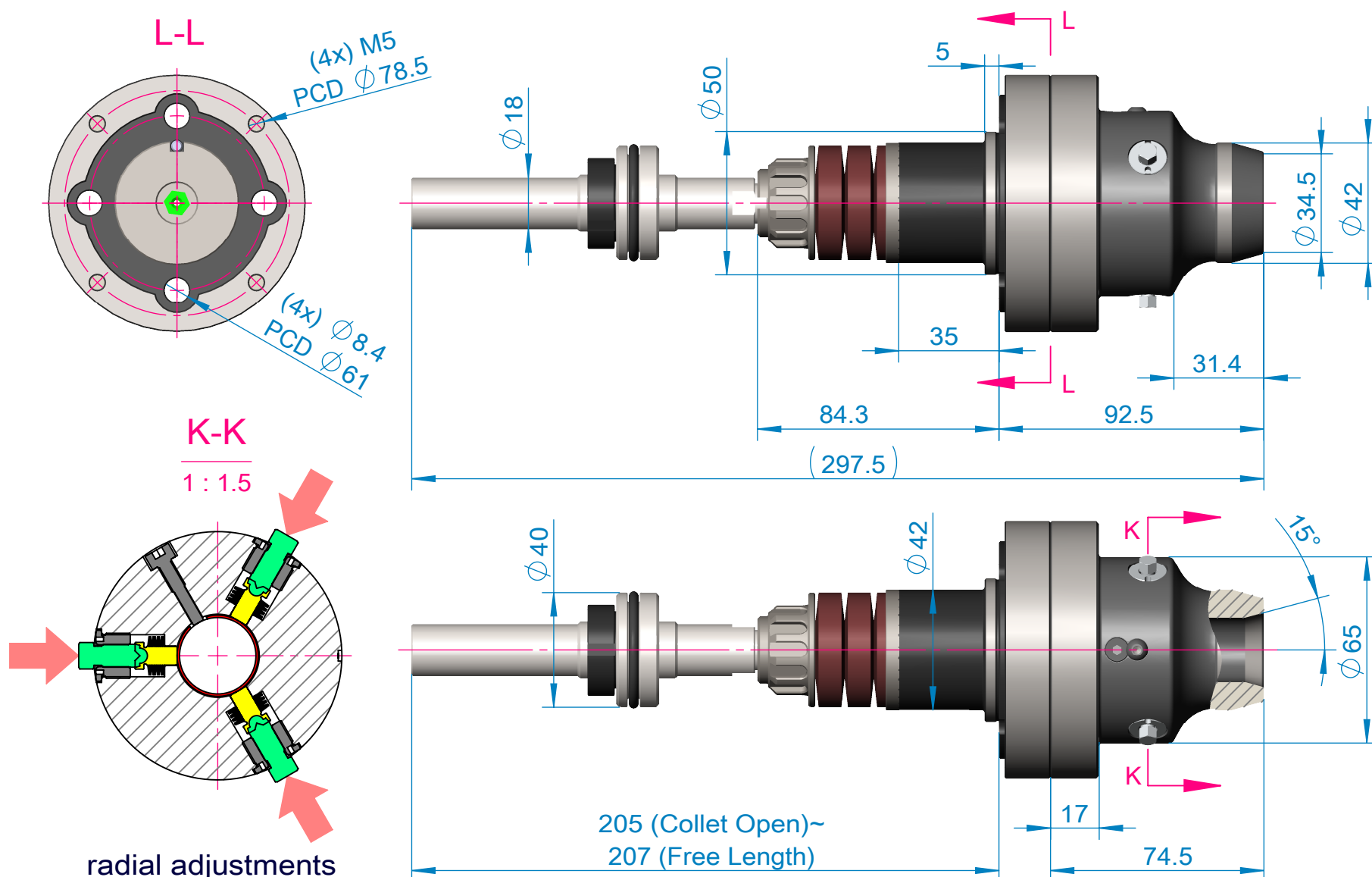
**For Walter**  
**Helitronic Power** ✓



This collet assembly uses Schaublin W20 collets up to 13 mm (available in both metric and imperial sizes).

The collet adapters has internal springs which generate the clamping force. Due to this, these collet adapters do not use a draw bar but instead rely on a push bar to open the collet. This removes any negative influence the headstock may have on the final run-out.

The collet, when inserted into the adaptor, can be manipulated using three adjustment pins spaced equally around the adaptor. By adjusting the collet, the tool can be made to run true. The tool will remain true running over short batches.



## SAP-25-PP

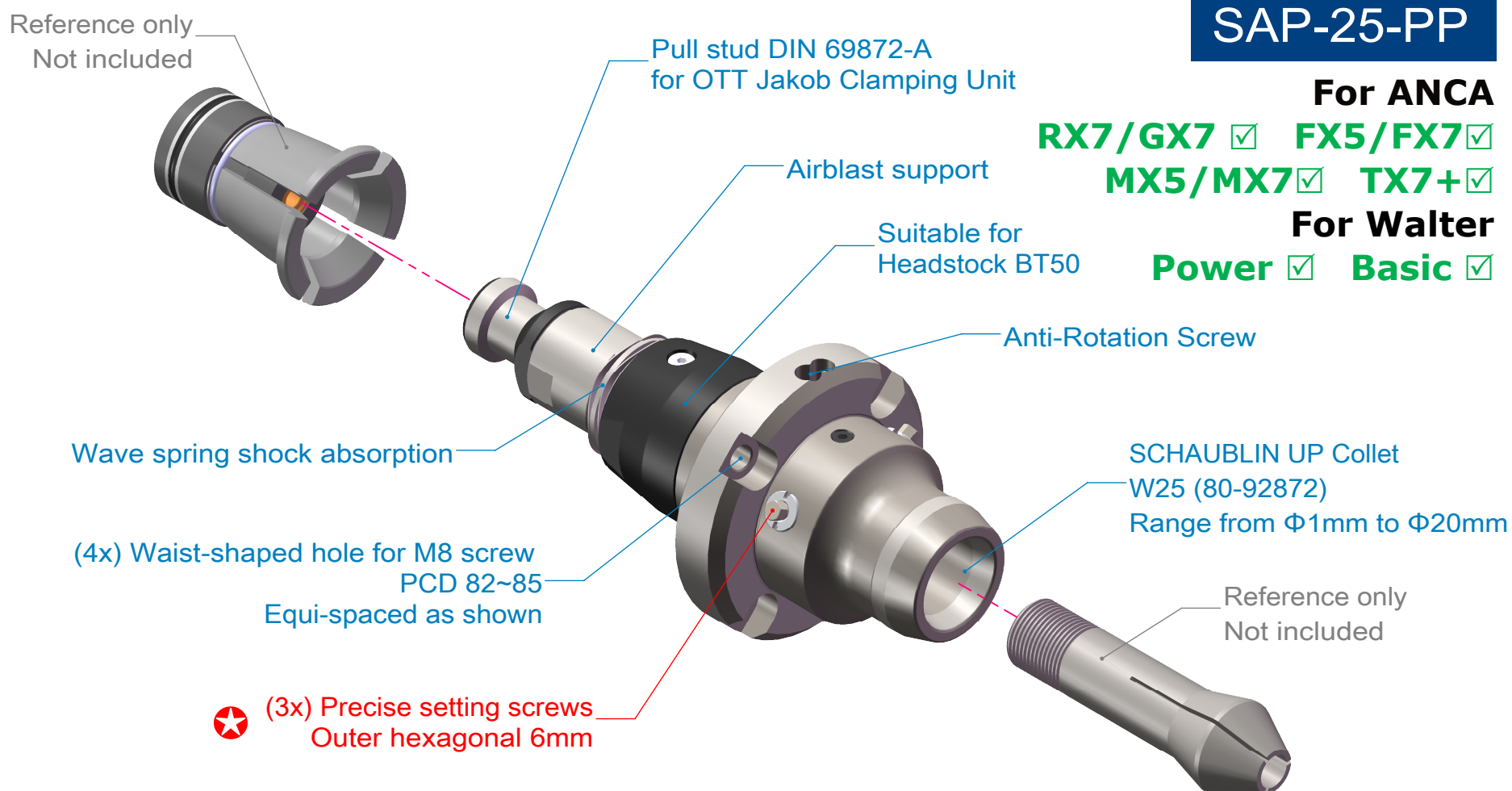
**For ANCA**

**RX7/GX7** ✓ **FX5/FX7** ✓

**MX5/MX7** ✓ **TX7+** ✓

**For Walter**

**Power** ✓ **Basic** ✓

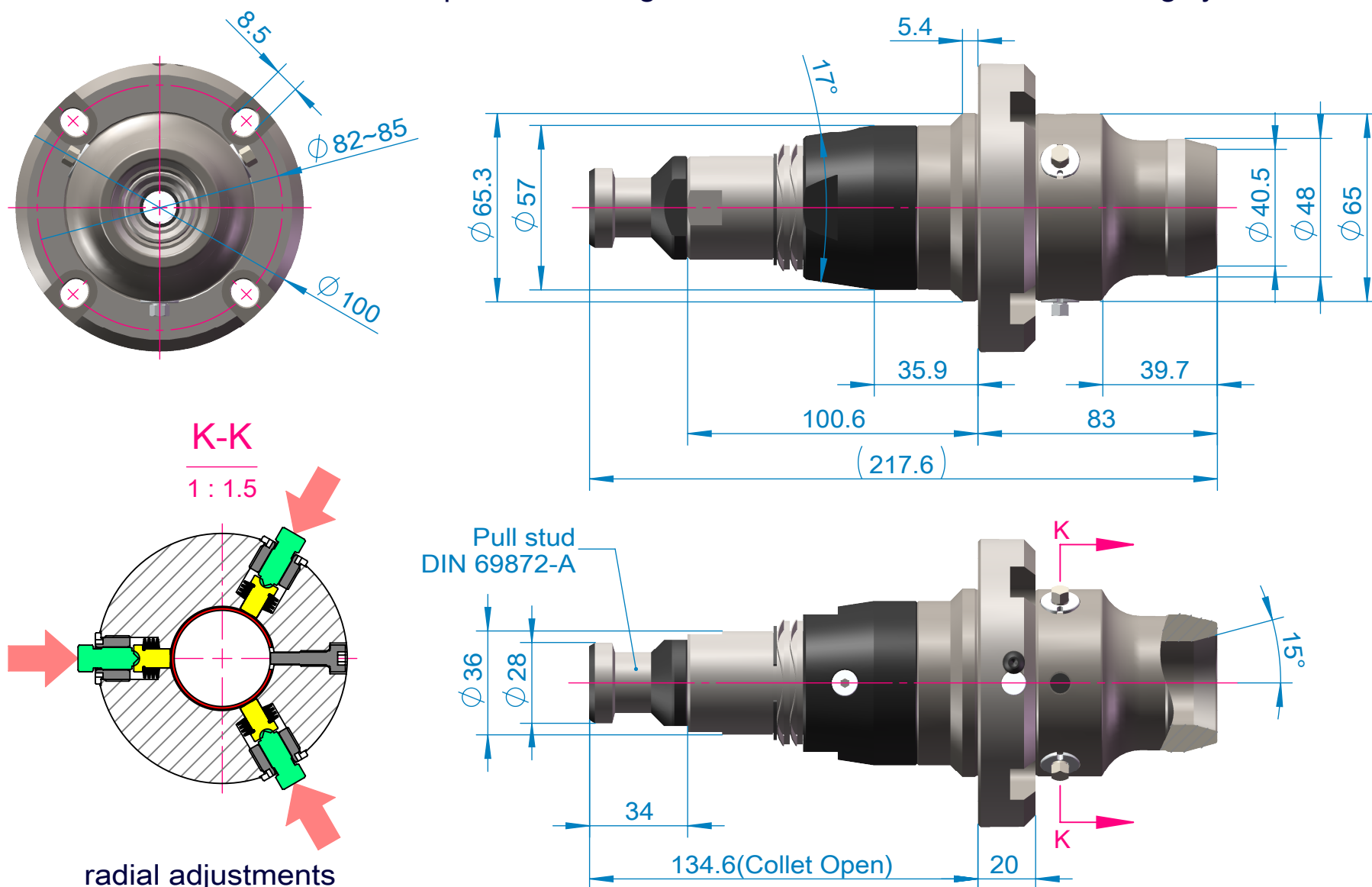


This collet assembly uses Schaublin W25 collets up to 20 mm (available in both metric and imperial sizes).

It can be mounted on ANCA RX7, GX7, FX Series, MX Series and TX7+ without needing an adaptor plate. Fastgrind and FX3 needs to be equipped with clamping system first.

The collet, when inserted into the adaptor, can be manipulated using three adjustment pins spaced equally around the adaptor. By adjusting the collet, the tool can be made to run true. The tool will remain true running over short batches.

The chuck utilizes the standard pull stud arrangement used for all ANCA work holding systems.





## SAP-25-HY

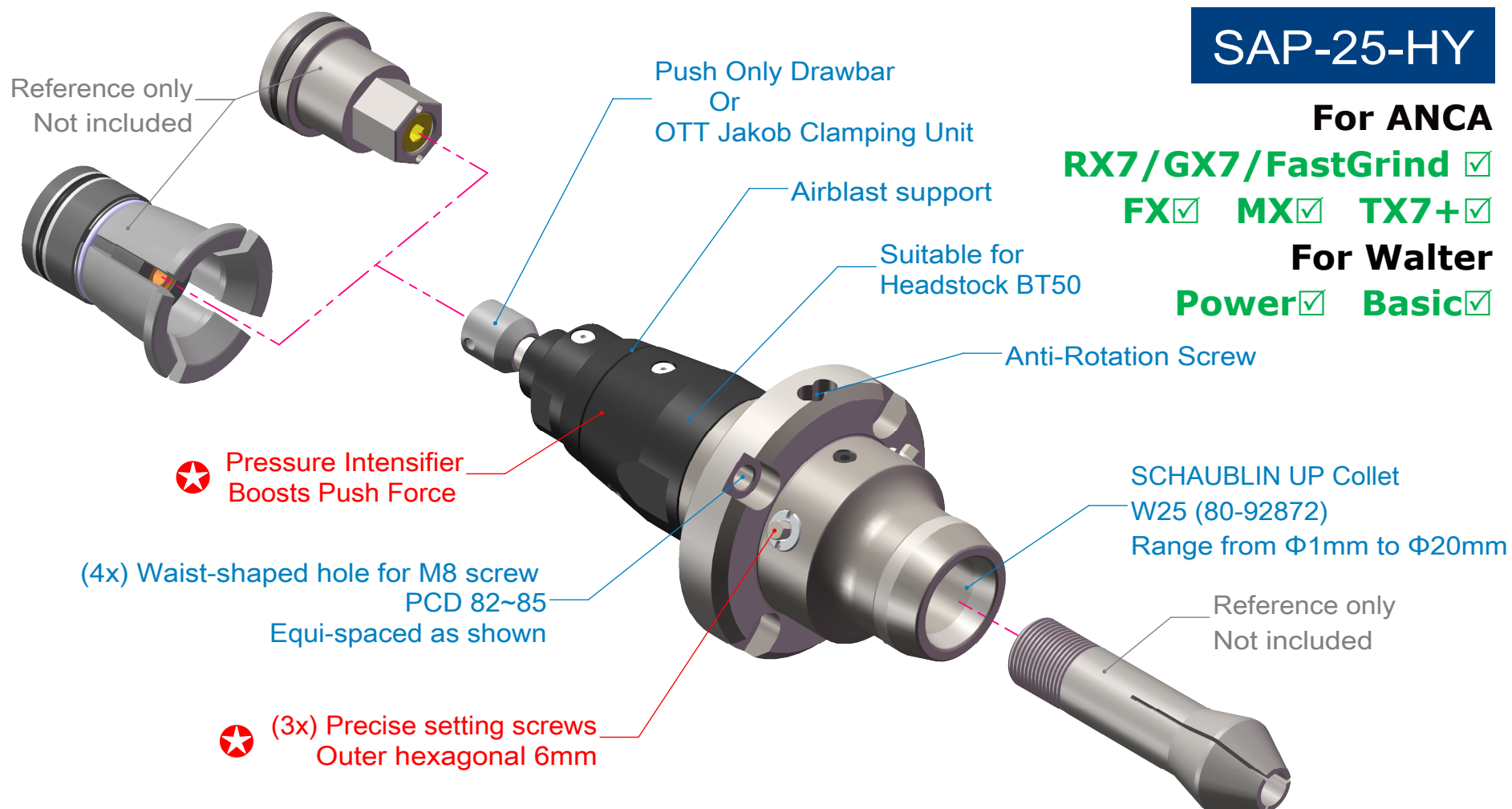
**For ANCA**

**RX7/GX7/FastGrind** ✓

**FX** ✓ **MX** ✓ **TX7+** ✓

**For Walter**

**Power** ✓ **Basic** ✓

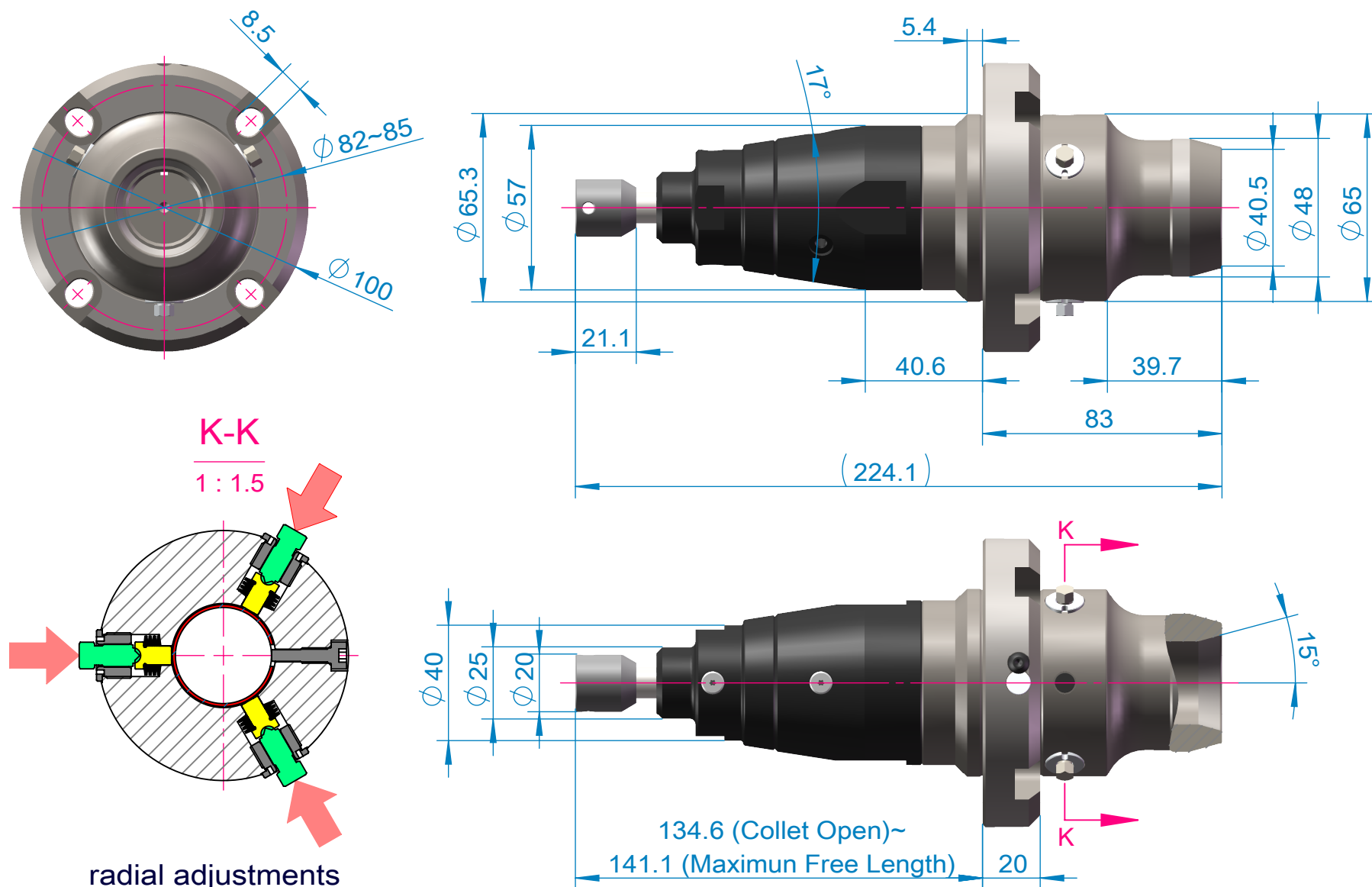


This collet assembly uses Schaublin W25 collets up to 20 mm (available in both metric and imperial sizes).

It can be mounted on ANCA RX7, GX7, Fastgrind, FX Series, MX Series and TX7+ without needing an adaptor plate.

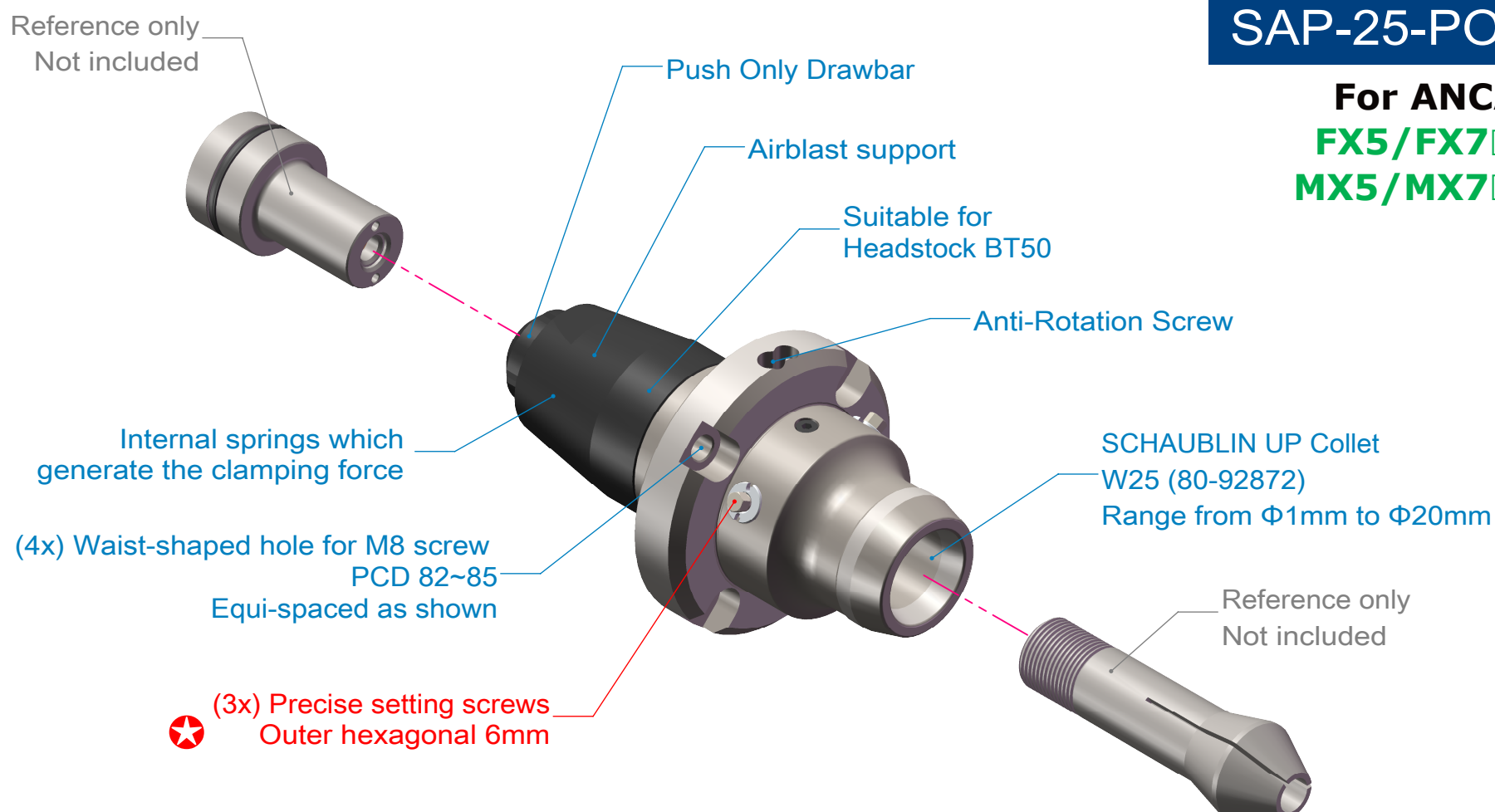
The collet, when inserted into the adaptor, can be manipulated using three adjustment pins spaced equally around the adaptor. By adjusting the collet, the tool can be made to run true. The tool will remain true running over short batches.

It is suggested that the drawbar push force of the machine should be greater than 3kN.



## SAP-25-PO

**For ANCA**  
**FX5/FX7** ✓  
**MX5/MX7** ✓

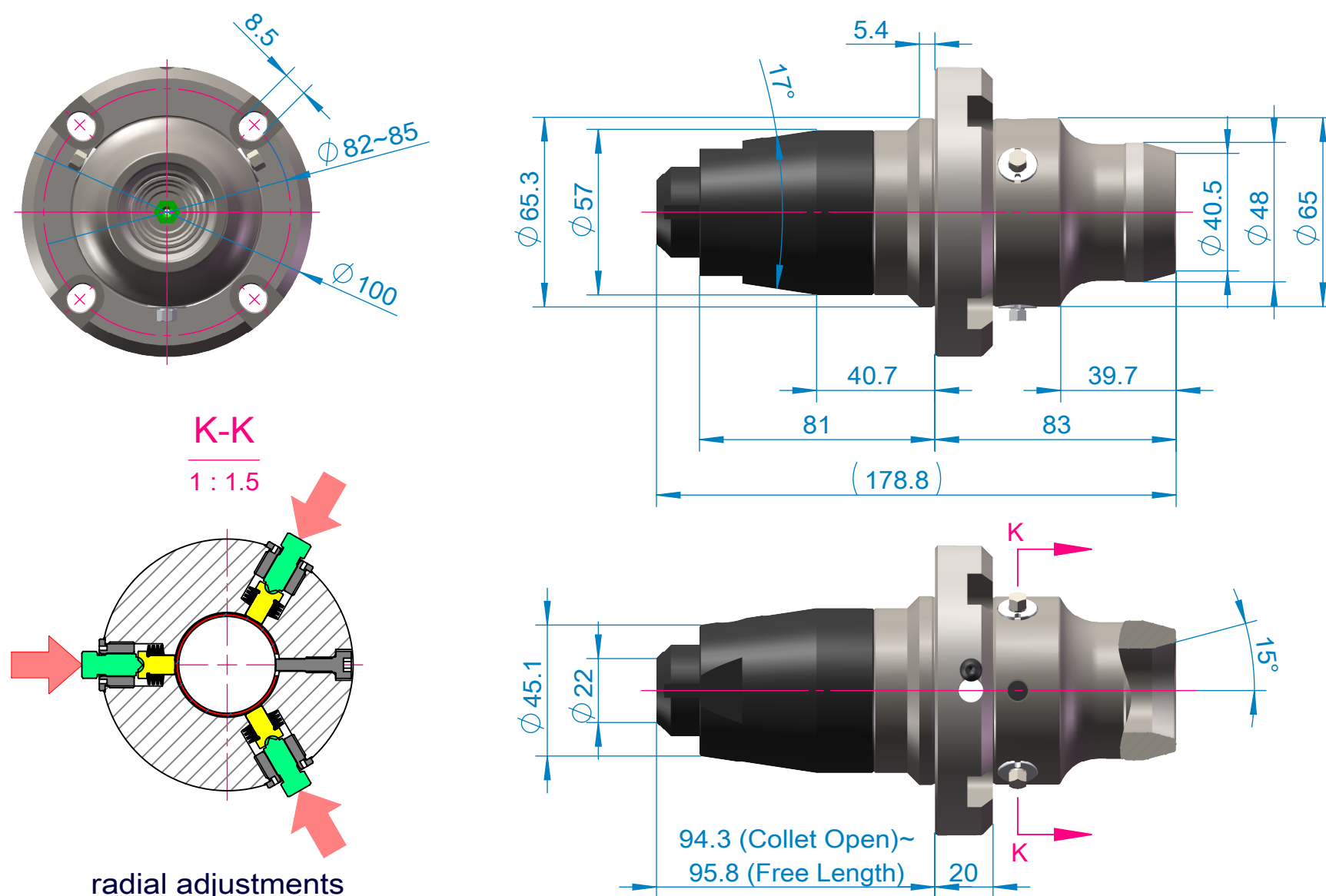


This collet assembly uses Schaublin W25 collets up to 20 mm (available in both metric and imperial sizes).

It can be mounted on ANCA FX Series and MX Series without needing an adaptor plate.

Each of these collet adapters has internal springs which generate the clamping force. Due to this, these collet adapters do not use a draw bar but instead rely on a push bar to open the collet. This removes any negative influence the headstock may have on the final run-out.

It is suggested that the drawbar push force of the machine should be greater than 7kN.



SRS-20-PP

## For ANCA

**RX7/GX7** ☒ **FX5/FX7** ☒

FX5 / FX7 ☒

**MX5/MX7** ☒ **TX7+** ☒

## For Walter

**Power** ☒ **Basic** ☒

\_(6x) Differential screws  
Inner hexagonal 3mm

- Anti-Rotation

## SCHAUBLIN UP Collet

—W20 (80-92744)

Range from  $\Phi 1\text{mm}$  to  $\Phi 13\text{mm}$

Reference only  
Not included

## Advantages

- Very precise and easily adjustable
- Easy maintenance
- Protected from dirt and shavings
- Applicable with most collets and a large variety of machines

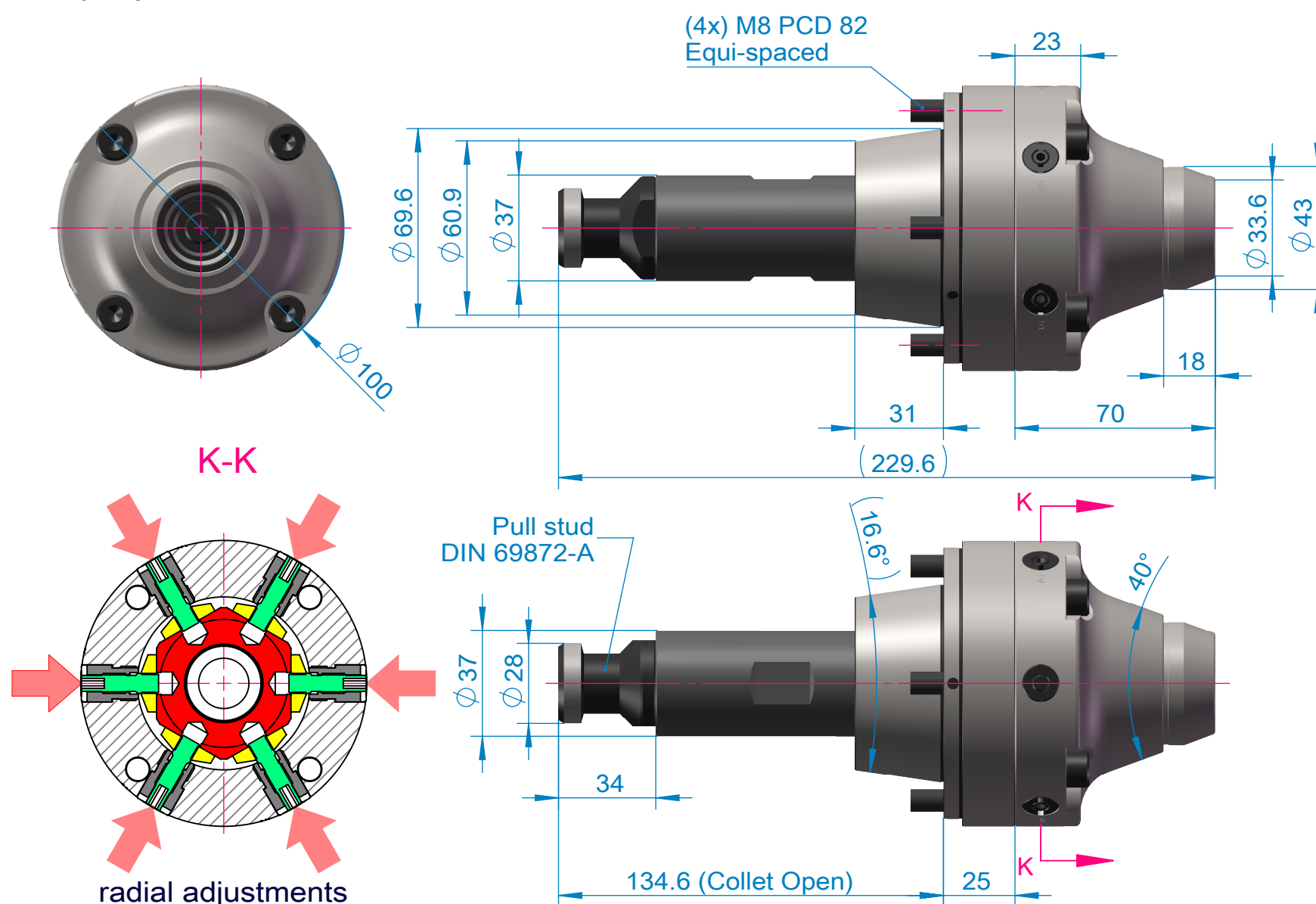
## Applications

- Manufacture and regrind of cutting tools
- Miscellaneous grinding applications
- Precise operations on pick-off spindles
- Inspection

With this clamping system the concentricity of the collet can be adjusted in such a manner that a runout of less than 0.002 mm can be achieved at any position of the workpiece.

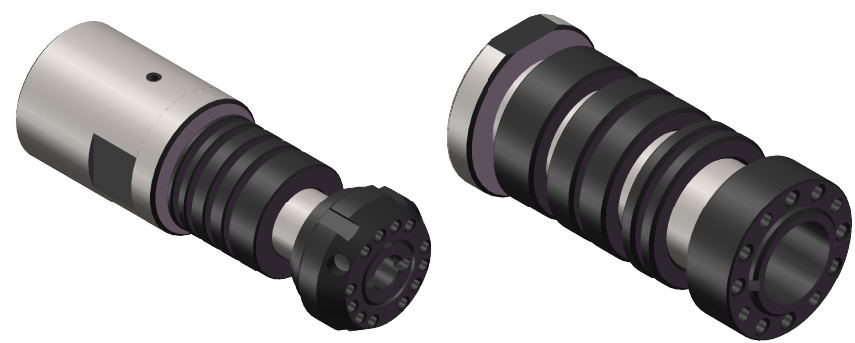
After adjusting the concentricity of the collet adapter, the collet can be inserted in the usual way or screwed from the front.

The final adjustment is performed directly with the clamped workpiece or an adapted gage. With the differential screws, the concentricity of the clamped part can be easily and safely adjusted.



ISO30-XX-XX-M

For ANCA  
RX7/GX7 ✓

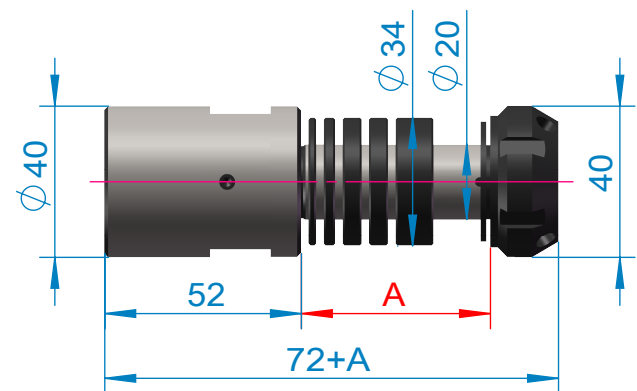


The RX7, GX7 offers a series of 20mm, 1 ¼” (31.75mm) diameter wheel arbors of varying length suited to the ANCA clamping system.

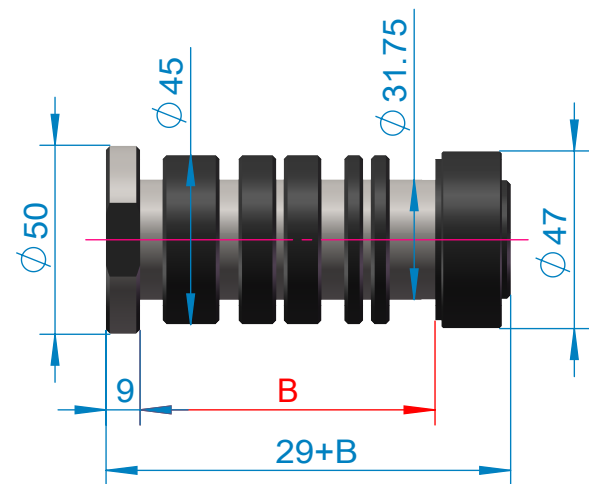
Each length wheel arbor comes complete with a set of wheel spacer's.

The wheel spindle has an ISO30 spindle nose with a male thread. The wheel arbors are held in place on the spindle nose by a spindle lock nut.

Each wheel arbor also comes standard with a wheel nut and washer. The wheel nut has all the features required for use with ANCA iBalance.



Part Number	Wheel Arbor Length (A)	Included Spacers			
		2mm	3mm	5mm	10mm
ISO30-20-48-M	48mm	1 pc	1 pc	2 pc	1 pc



Part Number	Wheel Arbor Length (B)	Included Spacers		
		5mm	10mm	15mm
ISO30-31.75-18-M	18mm	1 pc	-	-
ISO30-31.75-28-M	28mm	2 pc	-	-
ISO30-31.75-38-M	38mm	2 pc	1 pc	-
ISO30-31.75-55-M	55mm	2 pc	2 pc	-
ISO30-31.75-68-M	68mm	2 pc	1 pc	1 pc
ISO30-31.75-78-M	78mm	2 pc	2 pc	1 pc



## HSK40F-XX-XX-M

**For ANCA**

**RX7/GX7** ✓

**FastGrind** ✓

**FX3** ✓

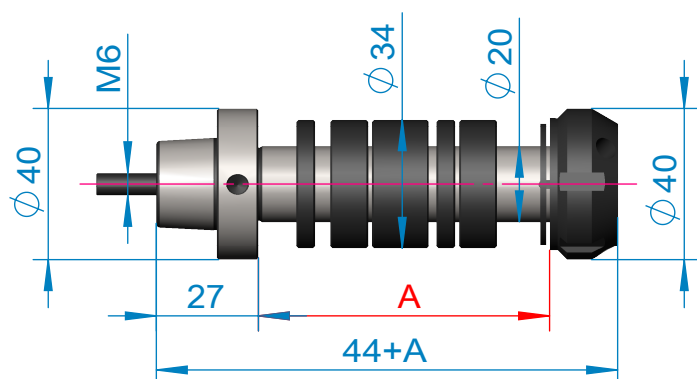


The FastGrind, RX7, GX7 offers a series of 20mm, 1 1/4" (31.75mm), 32mm diameter wheel arbors of varying length suited to the ANCA clamping system.

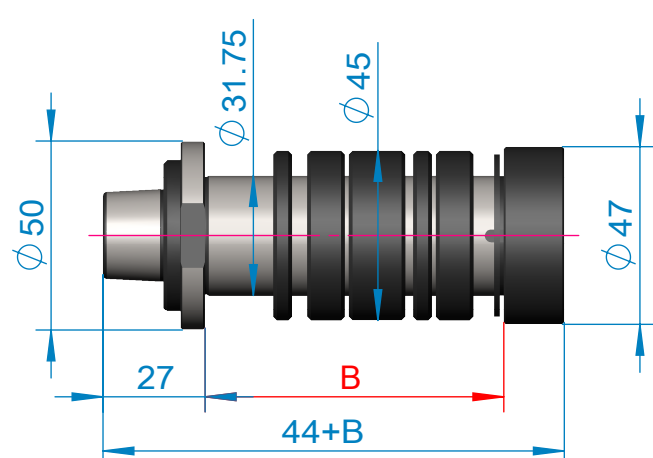
Each length wheel arbor comes complete with a set of wheel spacer's.

The wheel spindle has a HSK40F spindle nose. The wheel arbors are held in place on the spindle nose by a spindle lock screw.

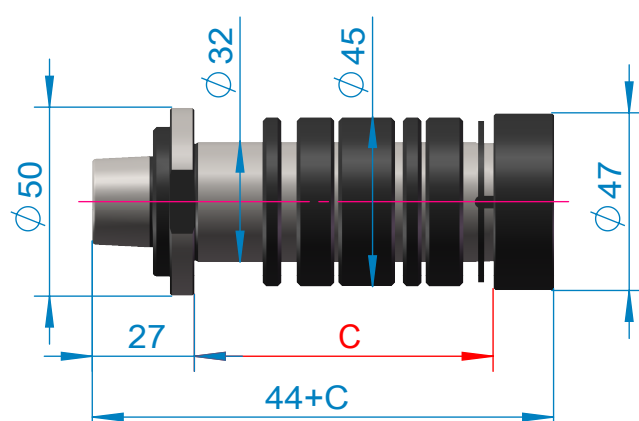
Each wheel arbor also comes standard with a wheel nut and washer. The wheel nut has all the features required for use with ANCA iBalance.



Part Number	Wheel Arbor Length (A)	Included Spacers		
		5mm	10mm	15mm
HSK40F-20-38-M	38mm	2 pc	1 pc	-
HSK40F-20-55-M	55mm	2 pc	2 pc	-
HSK40F-20-78-M	78mm	2 pc	2 pc	1 pc



Part Number	Wheel Arbor Length (B)	Included Spacers		
		5mm	10mm	15mm
HSK40F-31.75-18-M	18mm	1 pc	-	-
HSK40F-31.75-28-M	28mm	2 pc	-	-
HSK40F-31.75-38-M	38mm	2 pc	1 pc	-
HSK40F-31.75-55-M	55mm	2 pc	2 pc	-
HSK40F-31.75-68-M	68mm	2 pc	1 pc	1 pc
HSK40F-31.75-78-M	78mm	2 pc	2 pc	1 pc



Part Number	Wheel Arbor Length (C)	Included Spacers		
		5mm	10mm	15mm
HSK40F-32-18-M	18mm	1 pc	-	-
HSK40F-32-28-M	28mm	2 pc	-	-
HSK40F-32-38-M	38mm	2 pc	1 pc	-
HSK40F-32-55-M	55mm	2 pc	2 pc	-
HSK40F-32-68-M	68mm	2 pc	1 pc	1 pc
HSK40F-32-78-M	78mm	2 pc	2 pc	1 pc

HSK40F-XX-XX-A

For ANCA

- FX5 ✓
- FX7 ✓

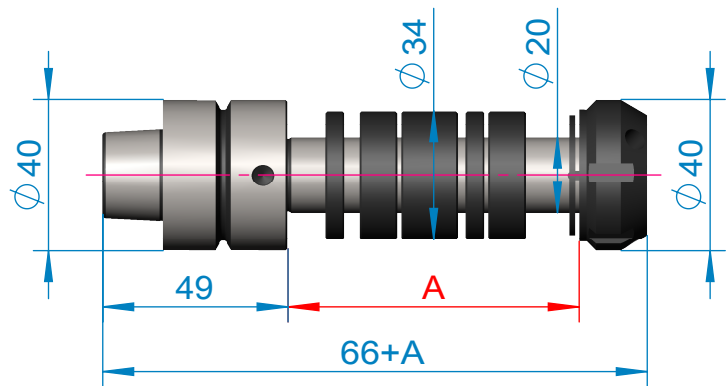


The FX5, FX7 offers a series of 20mm, 1 ¼” (31.75mm), 32mm diameter wheel arbors of varying length suited to the ANCA clamping system.

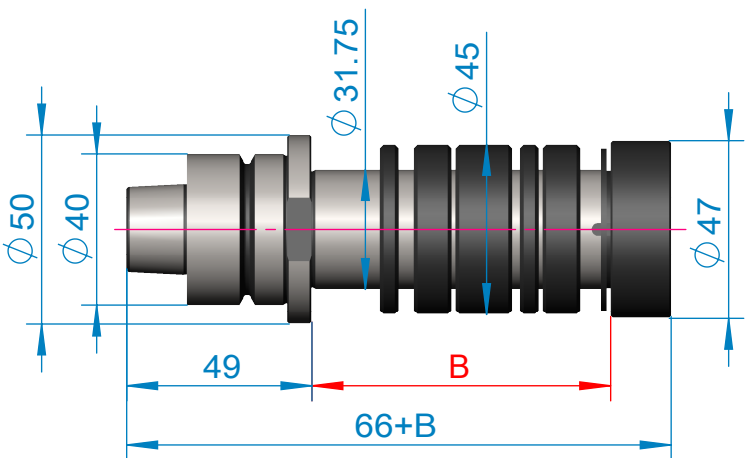
Each length wheel arbor comes complete with a set of wheel spacer's.

The wheel spindle has a HSK40F spindle nose. The wheel arbors are held in place on the spindle nose by a HSK clamping unit.

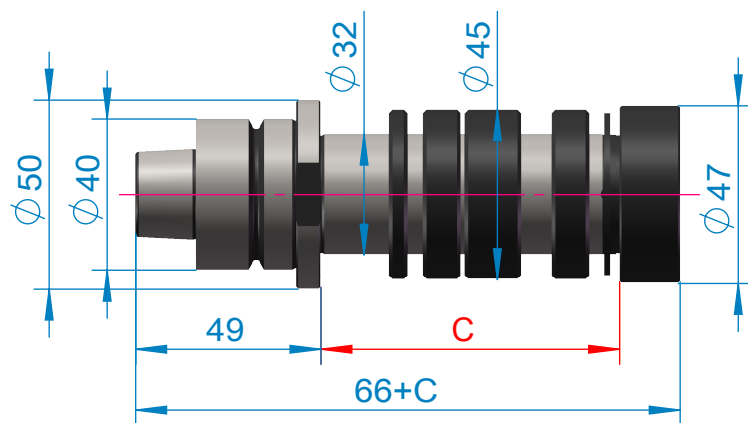
Each wheel arbor also comes standard with a wheel nut and washer. The wheel nut has all the features required for use with ANCA iBalance.



Part Number	Wheel Arbor Length (A)	Included Spacers		
		5mm	10mm	15mm
HSK40F-20-38-A	38mm	2 pc	1 pc	-
HSK40F-20-55-A	55mm	2 pc	2 pc	-
HSK40F-20-78-A	78mm	2 pc	2 pc	1 pc



Part Number	Wheel Arbor Length (B)	Included Spacers		
		5mm	10mm	15mm
HSK40F-31.75-18-A	18mm	1 pc	-	-
HSK40F-31.75-28-A	28mm	2 pc	-	-
HSK40F-31.75-38-A	38mm	2 pc	1 pc	-
HSK40F-31.75-55-A	55mm	2 pc	2 pc	-
HSK40F-31.75-68-A	68mm	2 pc	1 pc	1 pc
HSK40F-31.75-78-A	78mm	2 pc	2 pc	1 pc

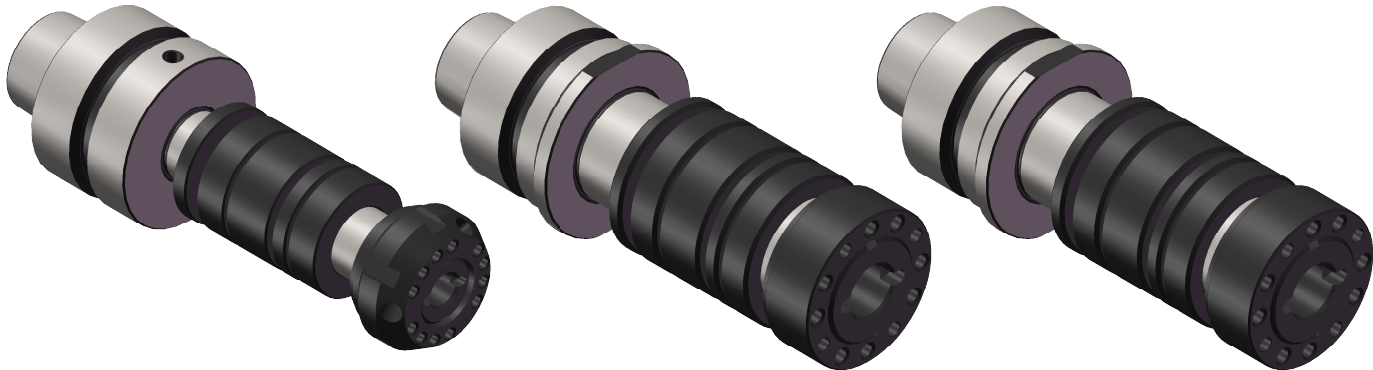


Part Number	Wheel Arbor Length (C)	Included Spacers		
		5mm	10mm	15mm
HSK40F-32-18-A	18mm	1 pc	-	-
HSK40F-32-28-A	28mm	2 pc	-	-
HSK40F-32-38-A	38mm	2 pc	1 pc	-
HSK40F-32-55-A	55mm	2 pc	2 pc	-
HSK40F-32-68-A	68mm	2 pc	1 pc	1 pc
HSK40F-32-78-A	78mm	2 pc	2 pc	1 pc

HSK50F-XX-XX-A

For ANCA

- MX5 ✓
- MX7 ✓

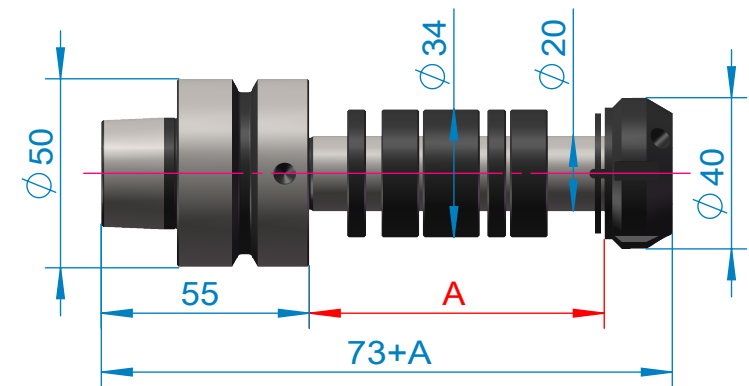


The MX5, MX7 offers a series of 20mm, 1 ¼” (31.75mm), 32mm diameter wheel arbors of varying length suited to the ANCA clamping system.

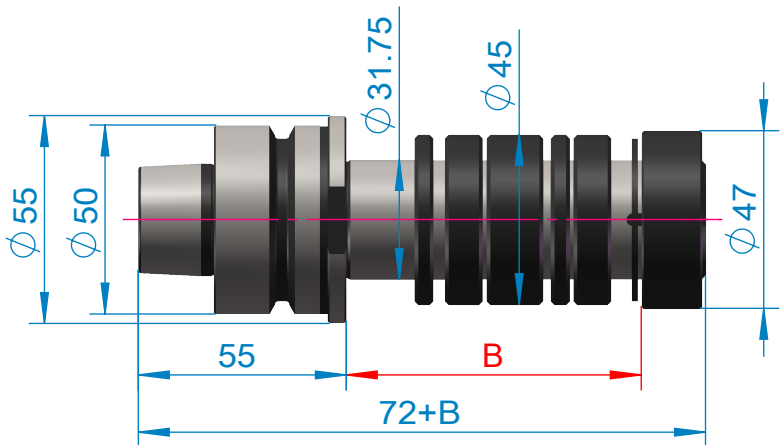
Each length wheel arbor comes complete with a set of wheel spacer's.

The wheel spindle has a HSK50F spindle nose. The wheel arbors are held in place on the spindle nose by a HSK clamping unit.

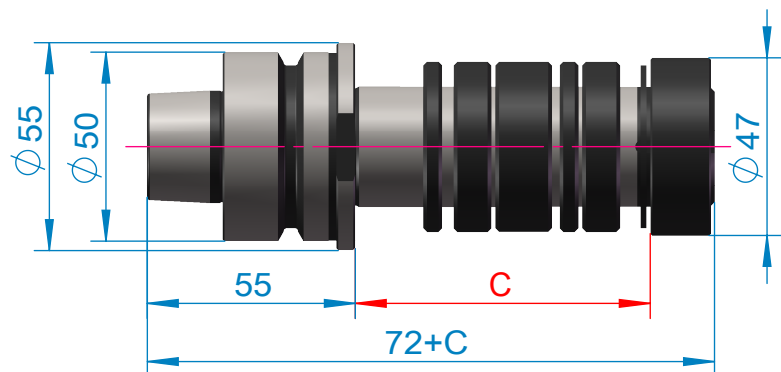
Each wheel arbor also comes standard with a wheel nut and washer. The wheel nut has all the features required for use with ANCA iBalance.



Part Number	Wheel Arbor Length (A)	Included Spacers		
		5mm	10mm	15mm
HSK50F-20-38-A	38mm	2 pc	1 pc	-
HSK50F-20-55-A	55mm	2 pc	2 pc	-
HSK50F-20-78-A	78mm	2 pc	2 pc	1 pc



Part Number	Wheel Arbor Length (B)	Included Spacers		
		5mm	10mm	15mm
HSK50F-31.75-18-A	18mm	1 pc	-	-
HSK50F-31.75-28-A	28mm	2 pc	-	-
HSK50F-31.75-38-A	38mm	2 pc	1 pc	-
HSK50F-31.75-55-A	55mm	2 pc	2 pc	-
HSK50F-31.75-68-A	68mm	2 pc	1 pc	1 pc
HSK50F-31.75-78-A	78mm	2 pc	2 pc	1 pc



Part Number	Wheel Arbor Length (C)	Included Spacers		
		5mm	10mm	15mm
HSK50F-32-18-A	18mm	1 pc	-	-
HSK50F-32-28-A	28mm	2 pc	-	-
HSK50F-32-38-A	38mm	2 pc	1 pc	-
HSK50F-32-55-A	55mm	2 pc	2 pc	-
HSK50F-32-68-A	68mm	2 pc	1 pc	1 pc
HSK50F-32-78-A	78mm	2 pc	2 pc	1 pc

---

# Precision grinding solutions



**BERYEAH**

BERYEAH Machinery Technology Co. Ltd

No. 36 Fukang Road Xuejia Town, Xinbei  
District Changzhou, 213001 China

T: +86 519 5868 2940

F: +86 519 8433 8998

M: +86 153 5194 0117

[beryeah@yeah.net](mailto:beryeah@yeah.net) | [www.beryeah.com](http://www.beryeah.com)

---

# Precision grinding solutions